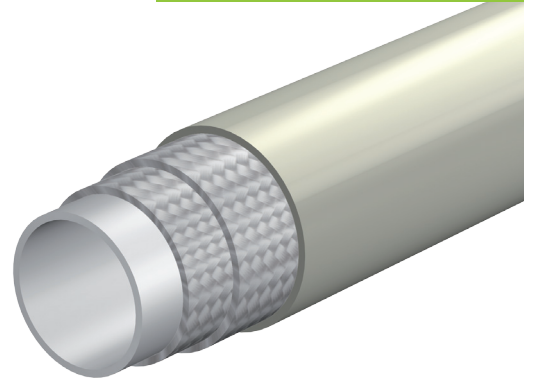


R7 Conforme alle normative **SAE 100R7 - ISO 3949.1**
According to **SAE 100R7 - ISO 3949.1** norms

Serie **FP17500**
Series



POLIESTERE TERMOPLASTICO
Thermoplastic polyester
Thermoplastisches Polyester-Elastomer

N. 2 STRATI DI FILATO IN FIBRA SINTETICA AD ALTA TENACITÀ
2 layers of braided high-resistance synthetic fibers
2 hochfeste Polyestergeflechte

POLIURETANO ANTIABRASIONE IDONEO PER AMBIENTI SALINI, MICROFORATO
Pin pricked anti-abrasion polyurethane suitable for salt water
Polyurethan abriebfest, salzwasserbeständig geprickt

DATI TECNICI

Technical Specifications • Technische Daten

INCH	mm	mm		MPa	bar	psi	MPa	bar	psi	bar			mm	gr/m						
3/16	5,0	10,0	FP17500B	20,7	207	3000	83	830	12035	415	4:1	±1,5%	30	70,0						
1/4	6,6	11,8	FP17500C	19,0	190	2750	76	760	11020	380	4:1	±1,5%	40	85,0						
5/16	8,0	14,2	FP17500D	17,3	173	2508	69	690	10005	345	4:1	±1,5%	50	124,5						
3/8	9,7	16,0	FP17500E	15,5	155	2250	62	620	9000	310	4:1	±1,5%	70	143,5						
1/2	13,0	20,0	FP17500F	14,0	140	2030	56	560	8120	280	4:1	±1,5%	95	225,0						

TEMPERATURE TEMPERATURE RANGE TEMPERATURBEREICH

Per fluidi idraulici
For hydraulic fluids • Für Hydrauliköle
-40°C (-40°F); +93°C (+199°F)

Per fluidi a base acquosa e aria
For water based fluids and air
Für Flüssigkeiten auf Wasserbasis
und Luft
Max +65°C (+149°F)

RACCORDI FITTINGS ARMATUREN

A pressare e recuperabili
Swage and reusable fittings
Preß- und Schraubarmaturen

POSSIBILI APPLICAZIONI APPLICATIONS ANWENDUNG

Oleodinamica media pressione in
ambienti salini
Marine medium pressure hydraulics
Mitteldruckanwendungen
Salzwasserumgebung

DIAMETRO INTERNO
Hose I.D. • Innendurchmesser

DIAMETRO ESTERNO
Hose O.D. • Außendurchmesser

CODICE
Part Number • Artikel-nr

PRESSIONE MINIMA DI SCOPPIO
Minimum Burst Pressure
Minimaler Berstdruck

PRESSIONE MAX DI LAVORO
Maximum Working Pressure
Maximaler Betriebsdruck

PRESSIONE DI PROVA
Test Pressure • Prüfdruck

COEFFICIENTE DI SICUREZZA
Safety Factor • Sicherheitsfaktor

ALLUNGAMENTO A PRESSIONE DI ESERCIZIO
Change in Length At Working Pressure
Längenänderung Bei Betriebsdruck

MINIMO RAGGIO DI PIEGATURA MECCANICA
Minimum Mechanical Bending Radius
Kleinster Biegeradius Mechanisch

PESO
Hose Weight • Gewicht

NOTE
NOTES • BEMERKUNGEN

I dati indicati sono riferiti a condizioni standard di prova (23°C+/-5°C)
Features are referred to standard laboratory conditions (23°C+/-5°C)
Die Daten beziehen sich auf Standardprüfbedingungen (23°C+/-5°C)