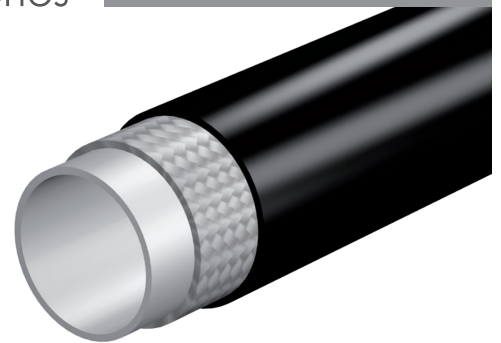



Serie
Series








NP19000



-  POLIESTERE TERMOPLASTICO FOOD GRADE
Thermoplastic polyester food grade
Thermoplastisches Polyester-Elastomer Für Lebensmittel
-  N. 1 STRATO DI FILATO IN FIBRA SINTETICA AD ALTA TENACITÀ
1 layer of braided high-resistance synthetic fiber
1 hochfestes Polyestergeflecht
-  POLIURETANO ANTIABRASIONE MICROFORATO
Pin pricked anti-abrasion polyurethane
Polyurethan abriebfest, geprickt

DATI TECNICI

Technical Specifications • Technische Daten

																						
INCH	mm	mm		MPa	bar	psi	MPa	bar	psi	bar			mm	gr/m								
3/16	5,0	8,3	NP19000B	13	130	1850	52	520	7540	260	4:1	±1,5%	30	42,0								
1/4	6,6	11,4	NP19000C	13	130	1850	52	520	7540	260	4:1	±1,5%	40	82,5								
5/16	8,0	13,4	NP19000D	12	120	1740	48	480	6960	240	4:1	±1,5%	50	110,0								
3/8	9,7	15,5	NP19000E	12	120	1740	48	480	6960	240	4:1	±1,5%	60	135,0								
1/2	13,0	19,2	NP19000F	11	110	1600	44	440	6380	220	4:1	±1,5%	30	200,0								
5/8	16,4	22,5	NP19000G	8	80	1160	32	320	4640	160	4:1	±1,5%	130	230,0								
3/4	19,5	25,7	NP19000H	6	60	870	24	240	3480	120	4:1	±1,5%	150	270,0								
1	26,0	32,5	NP19000I	5	50	725	20	200	2900	100	4:1	±1,5%	180	345,0								

TEMPERATURE
TEMPERATURE RANGE
TEMPERATURBEREICH

Per fluidi idraulici
For hydraulic fluids • Für Hydrauliköle
-40°C (-40°F); +93°C (+199°F)

Per fluidi a base acquosa e aria
For water based fluids and air
Für Flüssigkeiten auf Wasserbasis
und Luft
Max +65°C (+149°F)


RACCORDI
FITTINGS
ARMATUREN

A pressione
Swage fittings
Preßarmaturen

POSSIBILI APPLICAZIONI
APPLICATIONS
ANWENDUNG

Oleodinamica bassa pressione per
passaggio alimentare
Low pressure hydraulics for food
grade application
Niederdruckanwendungen mit
Lebensmittel

 **DIAMETRO INTERNO**
Hose I.D. • Innendurchmesser

 **DIAMETRO ESTERNO**
Hose O.D. • Außendurchmesser

 **CODICE**
Part Number • Artikel-nr

 **PRESSIONE MINIMA DI SCOPPIO**
Minimum Burst Pressure
Minimaler Berstdruck

 **PRESSIONE MAX DI LAVORO**
Maximum Working Pressure
Maximaler Betriebsdruck

 **PRESSIONE DI PROVA**
Test Pressure • Prüfdruck

 **COEFFICIENTE DI SICUREZZA**
Safety Factor • Sicherheitsfaktor

 **ALLUNGAMENTO A PRESSIONE DI ESERCIZIO**
Change in Length At Working Pressure
Längenänderung Bei Betriebsdruck

 **MINIMO RAGGIO DI PIEGATURA MECCANICA**
Minimum Mechanical Bending Radius
Kleinster Biegeradius Mechanisch

 **PESO**
Hose Weight • Gewicht

NOTE
NOTES • BEMERKUNGEN

I dati indicati sono riferiti a condizioni standard di prova (23°C+/-5°C)
Features are referred to standard laboratory conditions (23°C+/-5°C)
Die Daten beziehen sich auf Standardprüfbedingungen (23°C+/-5°C)